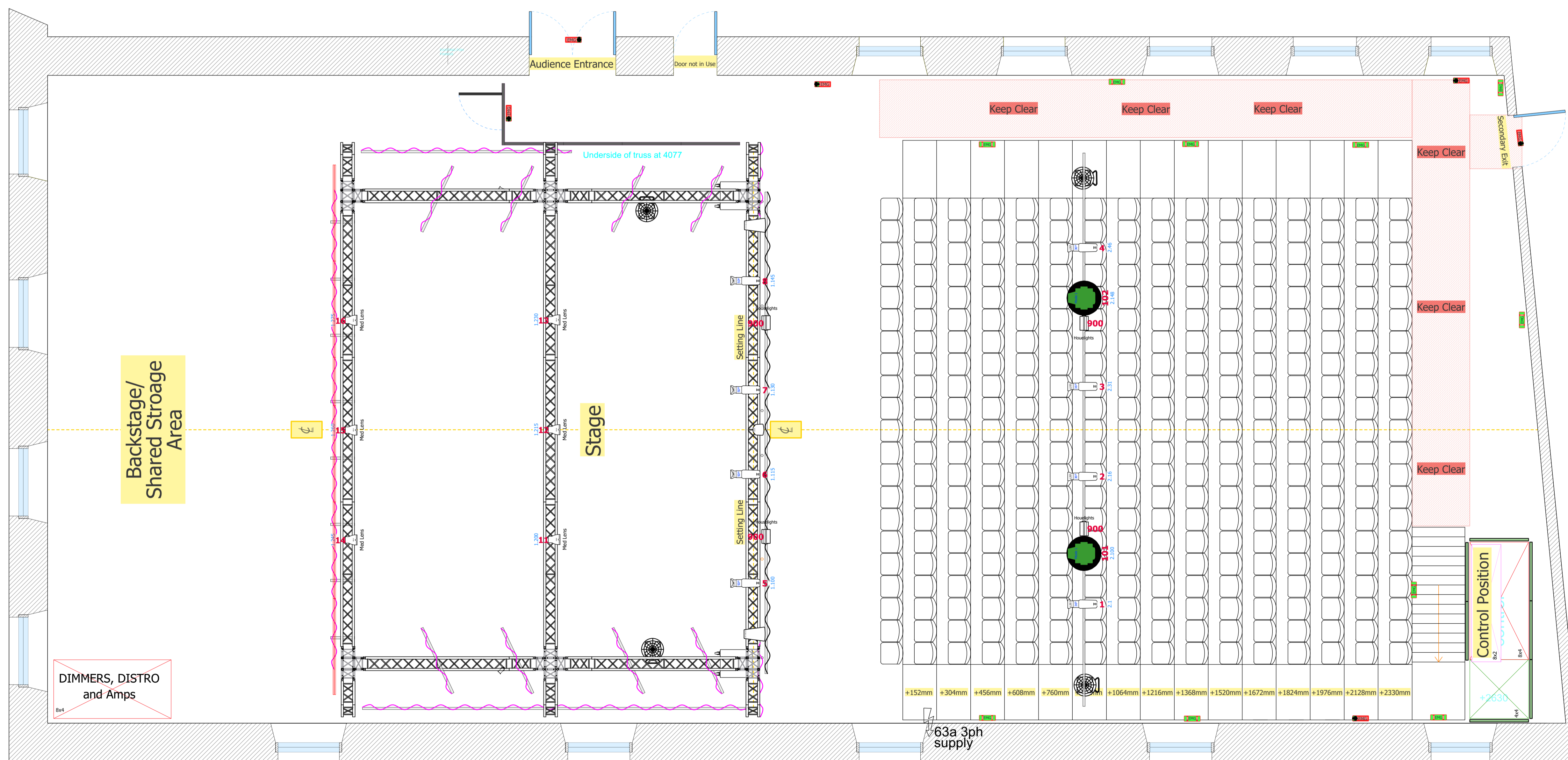


Setting Line



19/BYB/01 Pleasance Beyond - Venue Layout - Website View
Scale: 1:50

Key

- High End Solaframe Spot
- Selador D40 Desire Mode HSIC + 7
- ETC S4 Lustr Profile
- 500w Flood (Houselighting)

24 DIMMERS Available

1 - 21 company specials
22 backstage blues
23 - 24 Houselights

LED General Cover

- d&b V7-P Loudspeaker
- d&b e8 Loudspeaker
- d&b Q-Sub

Notes

Venue Seating Capacity - 336

Stage Setting Depth - 8.6m
Stage Width - 9m at Proscenium
Approx Grid Height - 4m

Shared backstage storage space.
Shared dressing room space with shower facilities.

Pleasance Theatre Trust reserve the right to alter their specification of their venues without prior notice or consultation.

Pleasance Theatre Trust
Carpenters Mews, North Road
London, N7 9EF

t. +44 (0)207 619 6868
e. edinburghtechnical@pleasance.co.uk
w. www.pleasance.co.uk

33
PLEASANCE
COURTYARD

• THE PLEASANCE •

Venue	Pleasance Beyond	Site	Courtyard
Drawing	Basic Venue Layout	Drawing No.	2019/BYB/01
Scale	1:50 @ A1	Date	27.03.19
Drawn By	Marec Joyce	Originally Drawn By	Matt Wilton/ Tom Wright